

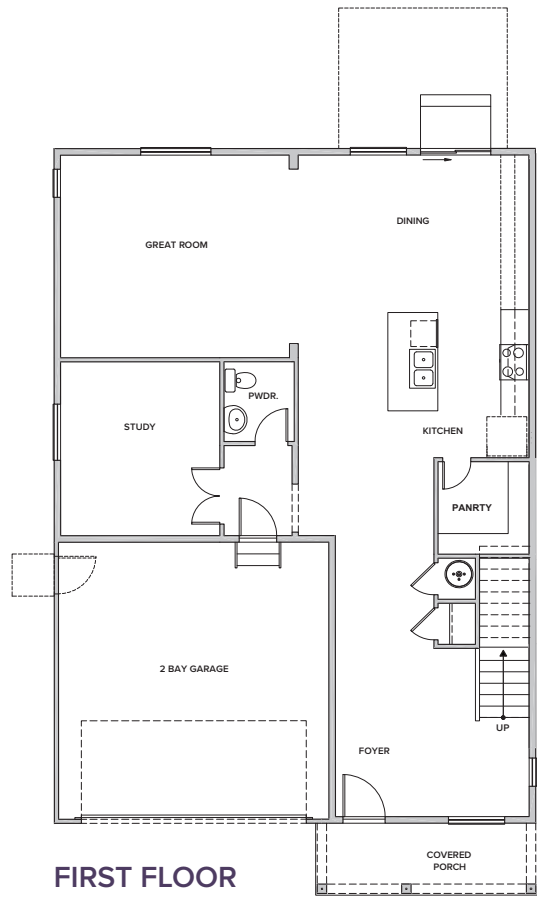
STARLING HILL AT THE MEADOWS



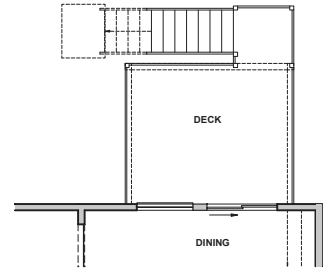
RESIDENCE 34205

APPROX. 2,641. FT. | TWO-STORY

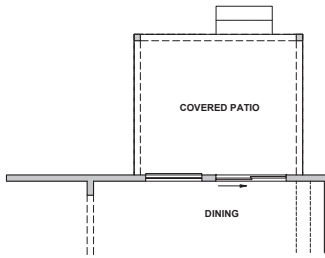
5 - 6 BEDROOMS | 2.5 - 3 BATHROOMS | 2 BAY GARAGE



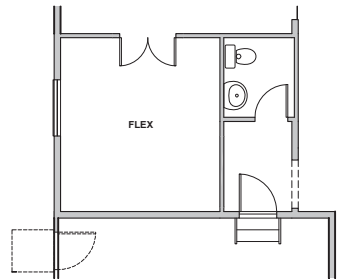
OPTIONAL COVERED DECK AT WALK-OUT/GARDEN LEVEL



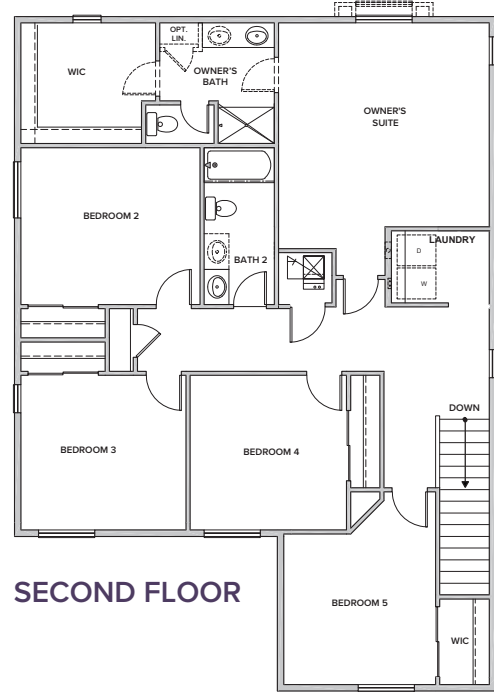
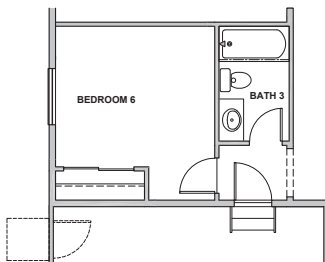
OPTIONAL COVERED PATIO



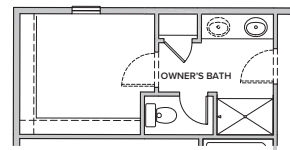
OPTIONAL FLEX



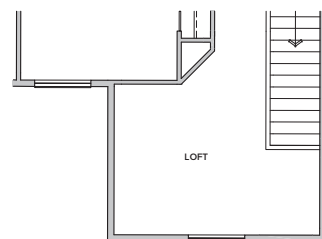
OPTIONAL BEDROOM 6 W/BATH 3



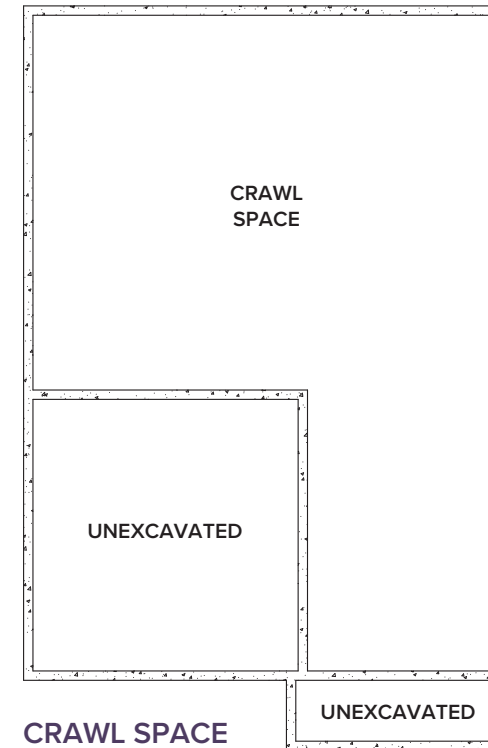
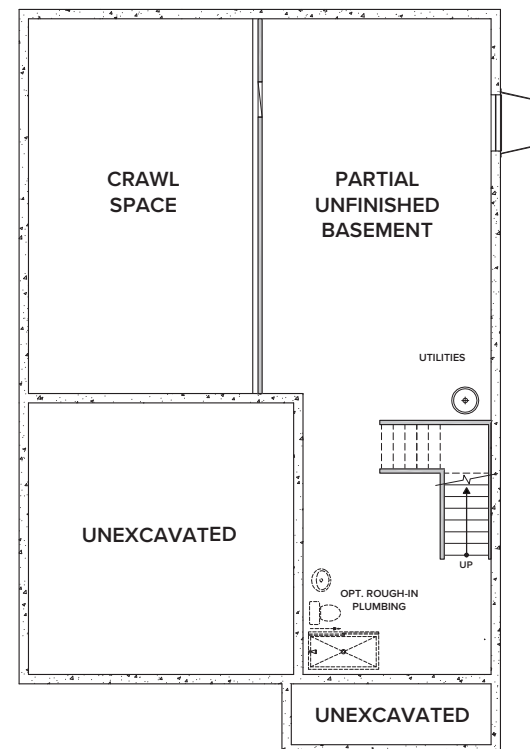
OPTIONAL OWNER'S LINEN



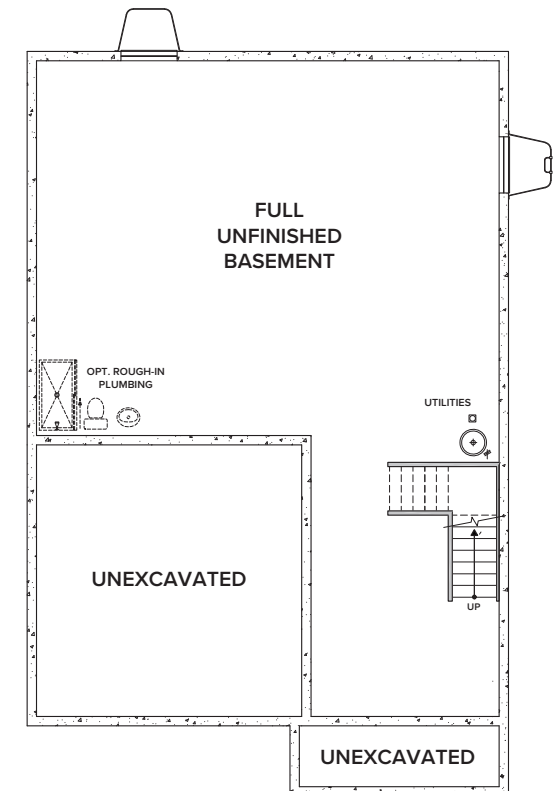
OPTIONAL LOFT



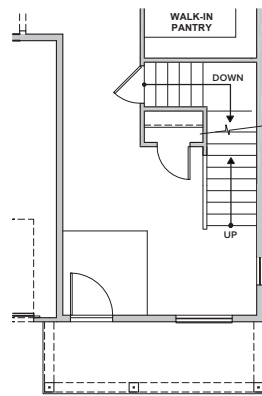
OPTIONAL PARTIAL UNFINISHED BASEMENT



OPTIONAL FULL UNFINISHED BASEMENT



FIRST FLOOR STAIRS WITH OPTIONAL BASEMENT



PRELIMINARY



Seller reserves the right to make changes or modifications to plans, amenities, maps, plan specifications, materials, features, and colors without notice. Maps, plans, landscaping and elevation renderings are artist's conceptions, are not to scale, and may not accurately depict the homes or lots as they are built. These illustrations may depict options and features that are not standard on all models. Optional features may be included in the purchase, and if included, will vary according to size and location of the lot. Exterior treatments, square footages, window locations, and room configurations may vary with elevation. Model home interior decorating, options, landscaping, fencing, and other amenities are for display purposes only. All marketing material is for illustrative purposes only and not a part of a legal contract. Square footages are approximate. All prices, plans, standard features, specifications, options, availability and estimated delivery dates are subject to change without prior notice. Additional restrictions may apply. See a New Home Counsellor for further details. Depictions of homes or other features are conceptual. Decorative items and other items shown may be decorator suggestions that are not included in the purchase price and availability may vary. Persons in photos do not reflect racial preference and housing is open to all without regard to race, color, religion, sex, handicap, familial status, or national origin. ©01/2018 Century Communities.